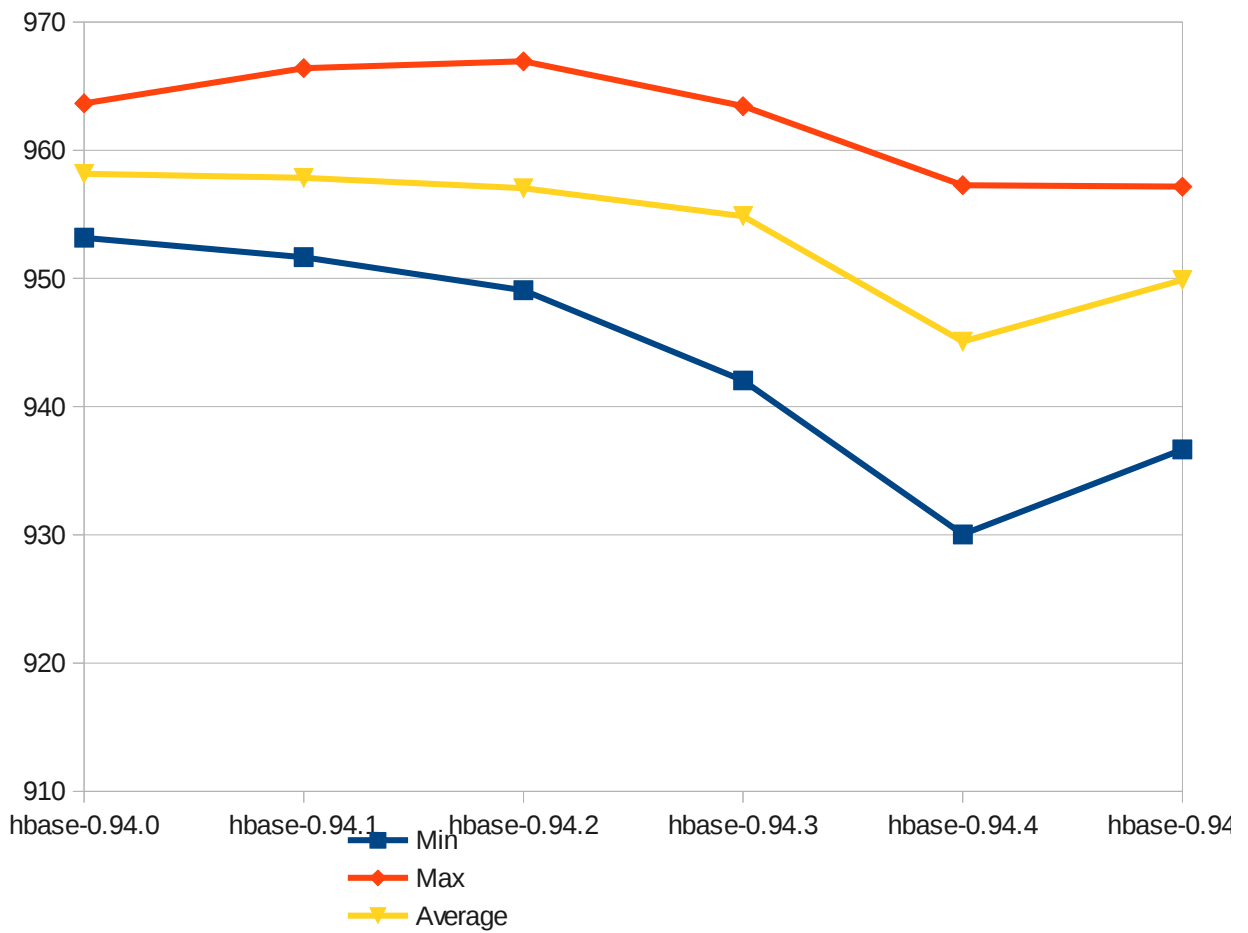


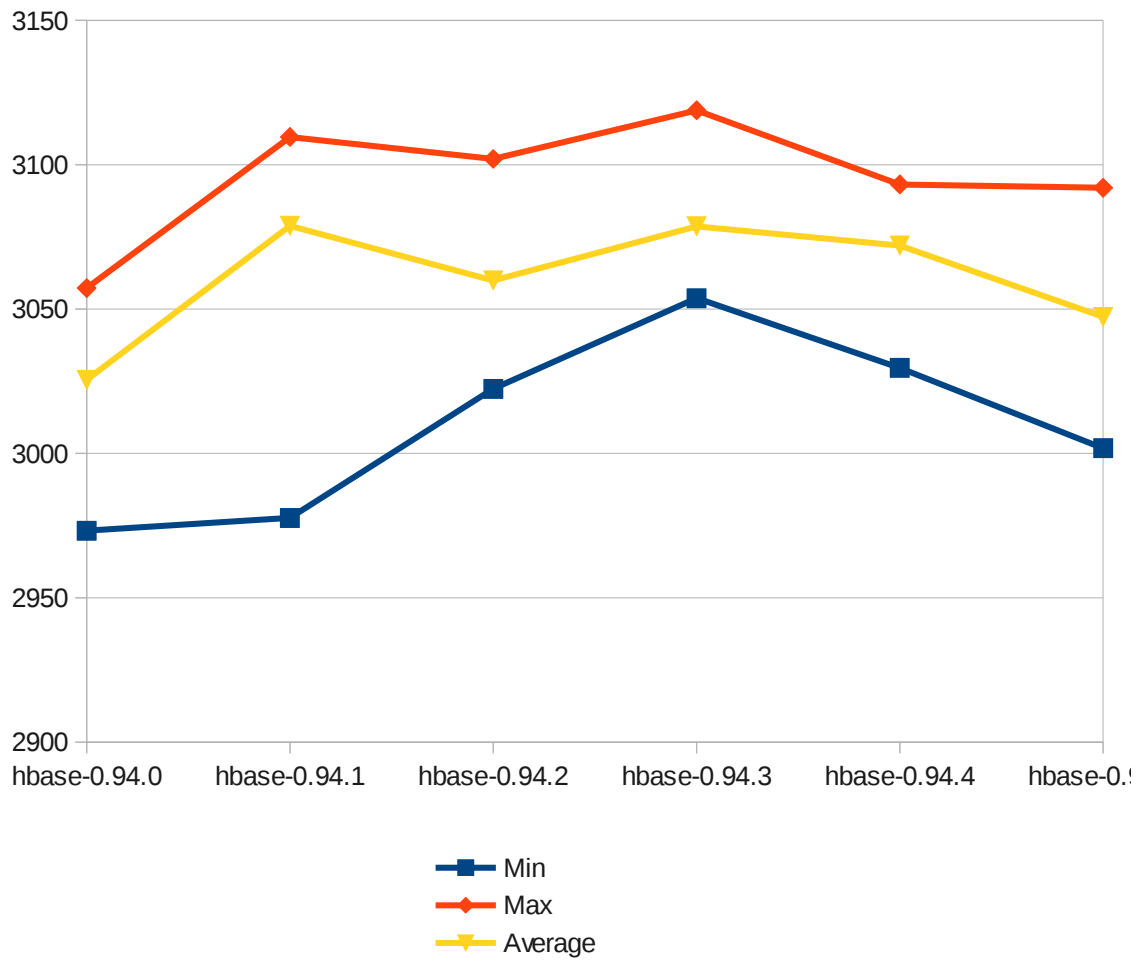
# FilteredScanTest

|              | Min | Max | FilteredScanTest |          | Precision |  |
|--------------|-----|-----|------------------|----------|-----------|--|
|              |     |     | Average          | Variance |           |  |
| hbase-0.94.0 | 953 | 964 | 958              | 3        | 0.28%     |  |
| hbase-0.94.1 | 952 | 966 | 958              | 4        | 0.40%     |  |
| hbase-0.94.2 | 949 | 967 | 957              | 4        | 0.40%     |  |
| hbase-0.94.3 | 942 | 963 | 955              | 4        | 0.45%     |  |
| hbase-0.94.4 | 930 | 957 | 945              | 3        | 0.29%     |  |
| hbase-0.94.5 | 937 | 957 | 950              | 3        | 0.32%     |  |



# RandomReadTest

|              | RandomReadTest |      |         |          |           |
|--------------|----------------|------|---------|----------|-----------|
|              | Min            | Max  | Average | Variance | Precision |
| hbase-0.94.0 | 2973           | 3057 | 3026    | 12       | 0.40%     |
| hbase-0.94.1 | 2978           | 3110 | 3079    | 11       | 0.36%     |
| hbase-0.94.2 | 3022           | 3102 | 3060    | 17       | 0.57%     |
| hbase-0.94.3 | 3054           | 3119 | 3079    | 11       | 0.35%     |
| hbase-0.94.4 | 3030           | 3093 | 3072    | 13       | 0.41%     |
| hbase-0.94.5 | 3002           | 3092 | 3047    | 20       | 0.65%     |



## RandomWriteTest

|              | RandomWriteTest |       |         |          |           |
|--------------|-----------------|-------|---------|----------|-----------|
|              | Min             | Max   | Average | Variance | Precision |
| hbase-0.94.0 | 13956           | 15101 | 14673   | 274      | 1.87%     |
| hbase-0.94.1 | 13721           | 15032 | 14393   | 345      | 2.40%     |
| hbase-0.94.2 | 12927           | 14798 | 14253   | 363      | 2.55%     |
| hbase-0.94.3 | 22132           | 24926 | 22980   | 652      | 2.84%     |
| hbase-0.94.4 | 20720           | 23888 | 22009   | 231      | 1.05%     |
| hbase-0.94.5 | 21420           | 26300 | 25446   | 485      | 1.91%     |

